

COUNTERQUICK™
LED Linkable Under Cabinet Fixture

**THE
FASTER,
BETTER,
QUALITY SOLUTION**
FOR UNDER CABINET LIGHTING

SATCO | NUVO®

SATCO® | NUVO®
WWW.SATCO.COM AUTHORIZED DEALER



© SATCO PRODUCTS, INC. ALL RIGHTS RESERVED 8/21 NU1688



COUNTERQUICK...SPEED WITH OPTIONS!

Product-engineered to get the job done!



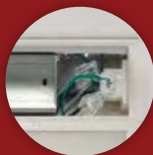
CONNECTOR
INPUT



CCT SELECTABLE AND
HIGH/LOW SWITCH



AMPLE SPACE
FOR WIRING



UV STABILIZED
LIGHT DIFFUSING LENS



CONCEALED INTEGRATED
MOUNTING SCREWS



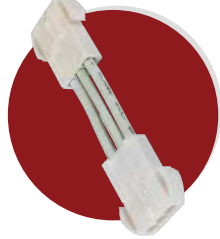
OPTIONAL ACCESSORIES



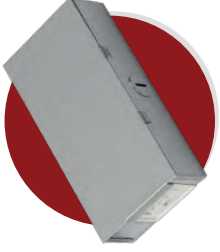
63-511
END-TO-END CONNECTOR
(1 included with fixture)



63-512
PLASTIC JUNCTION
BOX (63-512 3/8 in. Wire
Connector Attached)



63-518
MALE-TO-FEMALE
LINK CONNECTOR



63-514
METAL
JUNCTION BOX



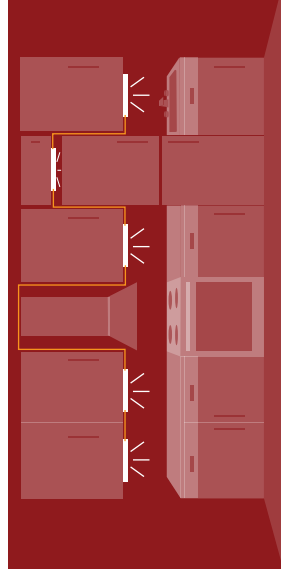
63-515 (6 in.), 63-516 (12 in.),
63-517 (24 in.)
LINK CABLE



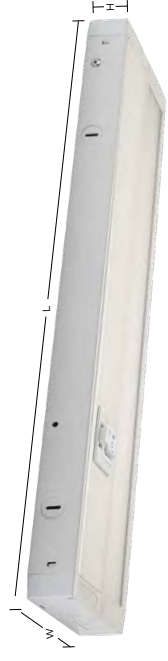
63-510
POWER
CORD

ITEM #	DESCRIPTION	DIMENSIONS
63-510	Under Cabinet Power Cord	L:60in.
63-511	Under Cabinet End Connector	L:1in.
63-513	Under Cabinet 3/8in. Wire Connector	L:1.5in. W:0.67in. H:0.35in.
63-514	Under Cabinet Junction Box - Plastic	L:4in. W:2in. H:1in.
63-515	Under Cabinet Junction Box - Metal	L:4in. W:2in. H:1in.
63-516	Under Cabinet Link Cable 6in.	L:6in.
63-517	Under Cabinet Link Cable 12in.	L:12in.
63-518	Under Cabinet Link Cable 24in.	L:24in.
63-518	Under Cabinet Cable Link Connector	L:3in.

GO TO NEW LENGTHS WITH EXTENSION CABLES



COUNTERQUICK™ LED LINKABLE FAMILY



(location of knockout points and keyholes may vary based on fixture size)

ITEM #	DESCRIPTION	WATTS	VOLTAGE	DIMENSIONS	CONNECTION QTY.
63-500	8in. LED Linkable Under Cabinet Fixture	5	120	L:8in. W:3.5in. H:1in.	up to 96
63-501	11in. LED Linkable Under Cabinet Fixture	6.5	120	L:11in. W:3.5in. H:1in.	up to 72
63-502	14in. LED Linkable Under Cabinet Fixture	9	120	L:14in. W:3.5in. H:1in.	up to 48
63-503	22in. LED Linkable Under Cabinet Fixture	13	120	L:22in. W:3.5in. H:1in.	up to 36
63-504	28in. LED Linkable Under Cabinet Fixture	17	120	L:28in. W:3.5in. H:1in.	up to 22

SUPERIOR LIGHT QUALITY COLOR, ENERGY AND SAVINGS

The superior quality of SATCO LED light source means consistent, reliable, maintenance-free light. No yellowing, no burn-outs, just beautiful, long lasting illumination.



CCT SELECTABLE

The advanced CCT selection feature and high/low switch is a stocking and installation advantage as well as an added value to property owners. Adjust the light output and select a desired color temperature right at the fixture.

CounterQUICK™ is compatible with most dimmers. For a full listing visit satco.com

BETTER BY DESIGN

- QUALITY ASSURANCE FOR CONSISTENT RELIABILITY
- SEAMLESS DESIGN, CONCEALED HARDWARE, LIGHT DIFFUSING LENS
- MADE FROM HIGH QUALITY DURABLE MATERIAL
- 5 YEAR WARRANTY*

*see terms and conditions at satco.com



FAST AND EASY

- AMPLE SPACE FOR HASSLE-FREE WIRING
- INTEGRATED MOUNTING SCREWS OR KEYHOLE MOUNTING
- END-TO-END CONNECTION OPTIONS, LINK UP TO 96 FIXTURES
- CONNECTION OPTIONS INCLUDING: DIRECT WIRE TO FIXTURE, JUNCTION BOX OR PLUG-IN OPTION

CONSISTENT QUALITY

- SUPERIOR 90 CRI QUALITY LIGHT
- COLORQUICK™ SELECTABLE CCT
- LONG, MAINTENANCE-FREE LIFE
- ENERGY STAR® CERTIFIED
- T24 CERTIFIED, CALIFORNIA COMPLIANT