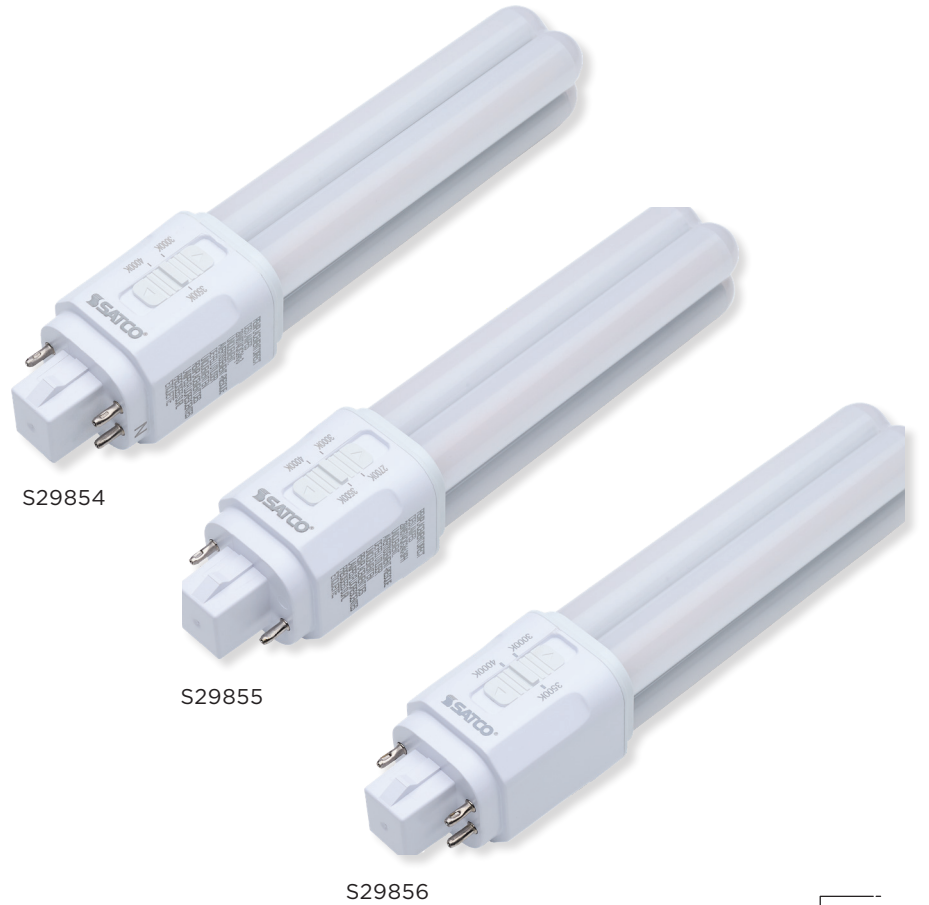


CFL REPLACEMENT LAMPS

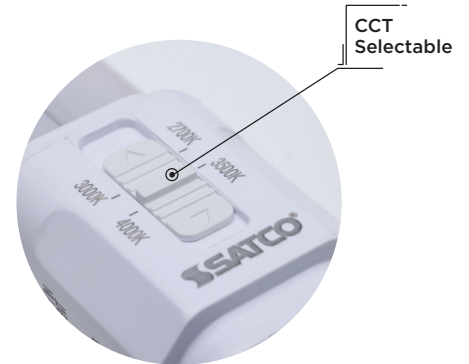
CCT SELECTABLE | UNIVERSAL OPERATION



S29854

S29855

S29856



CCT SELECTABLE

**TYPE A/B, TYPE A, OR TYPE B
BALLAST BYPASS OPTIONS**

**G24q (4-PIN) AND G24d (2-PIN)
MODELS**

**SUITABLE FOR USE IN
ENCLOSED FIXTURES**

SUGGESTED APPLICATIONS

- Retail
- Hospitality
- Office Buildings
- Schools



ColorQuick[®]
Selectable Color Technology

SATCO|NUVO's innovative CFL replacement lamps provide an efficient solution for upgrading older 18W, 26W, or 32W CFL fixtures to the energy-saving advantages of LED technology. These lamps are compatible with three distinct ballast options, providing flexibility for your existing setup. Type A/B and Type A lamps are ideal for replacing older CFLs without requiring rewiring, while Type B lamps are perfect for installations without a ballast. With two base options available—G24q (4-pin) and G24d (2-pin)—and color temperatures from 2700K to 4000K, users can tailor their lighting to suit diverse environments. Delivering a broad range of lumen outputs, our lamps offer exceptional versatility and long-lasting performance, making them an excellent choice for both residential and commercial spaces.



GENERAL SPECIFICATIONS

Frequency: 50/60Hz
Power Factor: 0.9
THD: <20%
CFL Replacement Wattage: 18W/26W/32W
CRI: 80
Location Rating: Damp
Ambient Operating Temperature: -20°C (-4°F) to +45°C (+113°F)
Rated for Enclosed Fixture: Yes

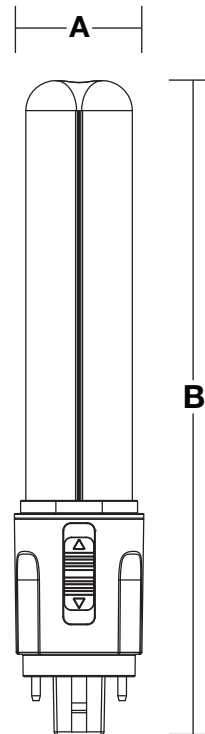
Operating Position: Universal
Input Current: 0.08-0.03A
Beam Angle: 360°
Lamp Shape: PL
Material: Aluminum/Plastic
Lens Finish: Frost
Functional Life (L70): 50,000 Hours
Warranty: 5 Years

ITEM SPECIFICATIONS / ORDER INFO



Item	Wattage	Input Voltage	Dimmable	Ballast	Efficacy	Lamp Lumens	Lamp Base	CCT
S29854	9.5W	120V-277V	Only in Type A Mode	Type A - Ballast Required or Type B - Ballast Bypass	Up to 135 LPW	1100/1150/1200	G24q	3000K/3500K/4000K
S29855	9W	120V-277V	Non-Dimmable	Type B - Ballast Bypass	Up to 127 LPW	1050/1100/1150/1200	G24d	2700K/3000K/3500K/4000K
S29856	9.5W	Ballast Dependant	Only with Compatible Ballasts	Type A - Ballast Required	Up to 126 LPW	1100/1150/1200	G24q	3000K/3500K/4000K

Item	Width (A)	Height (B)	Weight
S29854	1.40"	6.90"	0.20 Lbs
S29855	1.40"	6.90"	0.20 Lbs
S29856	1.40"	6.90"	0.20 Lbs



This device complies with Part 15 of the FCC Rules. Operation is subject to the following two conditions: (1) this device may not cause harmful interference, and (2) this device must accept any interference received, including interference that may cause undesired operation.

May not be compatible with all dimming ballasts. Visit satco.com for details.

WARNING: Some products included in this specification sheet may be subject to the warning requirements of California's Proposition 65.

Please refer to your product packaging for more information.

Replacement wattage shown depends on application and fixture.

Specifications are subject to change without prior notice.

Visit satco.com/service/warranty for complete warranty details.

CAN ICES-005 (B) Meets requirements of ICES-005 issue 5 class B for use in residential applications.